



cyberEye II

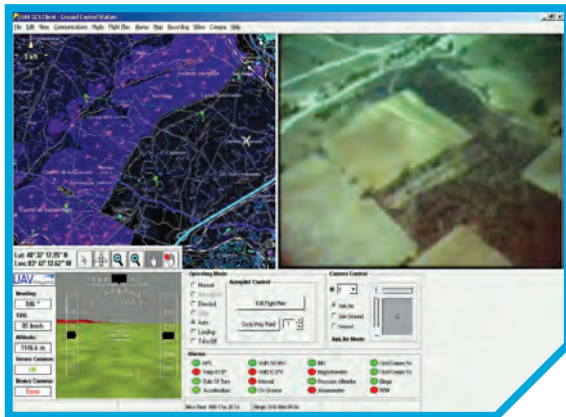
The **CyberEye II** is a Medium Altitude Long Endurance (MALE) unmanned aerial vehicle (UAV), capable of carrying a 10 to 15 kg payload for up to 10 hours.

CyberEye II is a all composite construction to prevent the effects of humidity on the airframe while also being very durable and easy to repair if damaged.

CyberEye II is powered by a 100cc twin cylinder horizontally opposed two stroke engine, delivering over 10hp through a 24 inch three blade carbon fibre propeller. Fuel consumption is 3 litres per hour at a cruise speed of 90-100 kph, with a fuel burn rate of 3.5 litres per hour at a maximum dash speed of 160 kph.



continued overleaf



The engine also provides electrical power through an onboard generator for powering the on board systems and payload, a 12VDC and a 6VDC regulated bus provides all electrical power with back up 12VDC and 6VDC storage batteries each with enough power to get the aircraft back to base (approx 1 hour life).

The **CyberEye II** is flown using the UAV Navigation AP04 auto pilot and combined with the GCS03 ground station also from UAV Navigation, provides the complete mission command and control system.

Using this system it is possible to fly up to six separate aircraft from one ground station, each aircraft is navigated by DGPS, with communication provided by a 1 watt, frequency hopping encrypted data link sending packet data at a rate of 115kbs, this data link has

SPECIFICATIONS	MAXIMUM	NOMINAL
Endurance	10 hours	6 hours
Payload	20 kg	15 kg
Take Off Weight	60 kg	50 kg
Airspeed	160 km/h	100 km/h
Altitude	15,000 ft ASL	1,000 ft AGL
Data Range	150 km	100 km
Video Range	30 km	20 km

SPECIFICATIONS

Generator Power	450 Watts
Wing Span	4.5 m
Length	2.8 m

been proven to operate out to 100km and further when utilising a high gain ground station tracking antenna ranges of up to 150km can be expected. The software to drive the tracking antenna is in-built into the ground station.

The standard payload of the **CyberEye II** is a Sony 26 times zoom Pan, Tilt, Zoom fully stabilised, 360 degree rotation camera system.

For civilian use the transmission frequency of this system is 2.4Ghz.

The video transmission power can be anything from 2 watt up to 10 watt, the transmitter being powered from the on board generator. Using a tracking antenna, the transmission range of the 5 watt video transmitter has been proven out to 20km.



1 Ambitious Link
BIBRA LAKE · 6163
Western Australia

Telephone +61 8 9418 9200
Facsimile +61 8 9418 9201
email info@cybertechuav.com.au